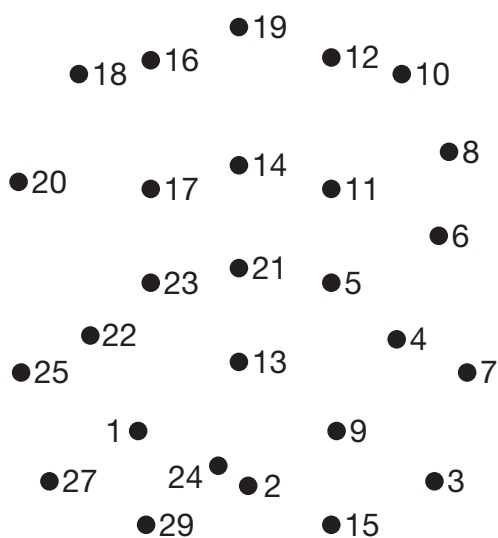


Use your knowledge to answer these questions
and practise your times table skills!

2 TIMES TABLE: PUZZLES

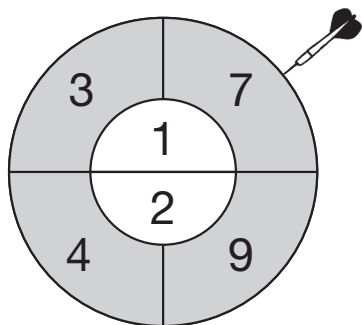
1) Complete this dot-to-dot puzzle by joining multiples of 2 in increasing numerical order. Ignore any numbers that are not multiples of 2.



2) Draw lines to match the multiplications to the correct answers.

6×2
 8×2 9×2
 3×2 4×2
 11×2

3) Can you form each of the products below by choosing the correct pair of factors to multiply together, picking one from each ring of this dartboard? For example, you could form 7 by picking 1 from the inner ring and 7 from the outer ring.



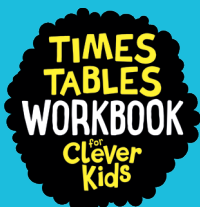
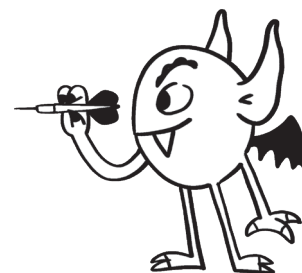
Products:

..... = 8

..... = 9

..... = 14

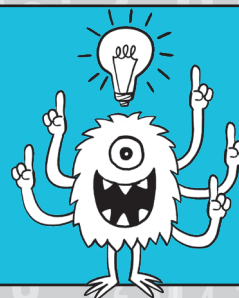
..... = 18



This activity page contains puzzles from the
Times Tables Workbook for Clever Kids.

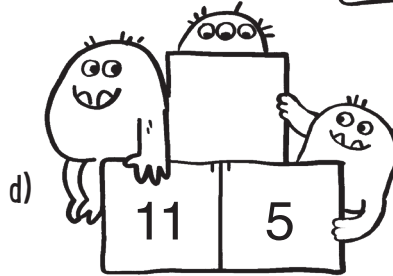
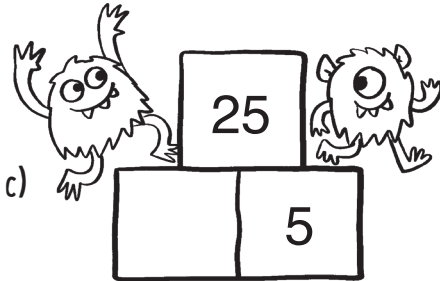
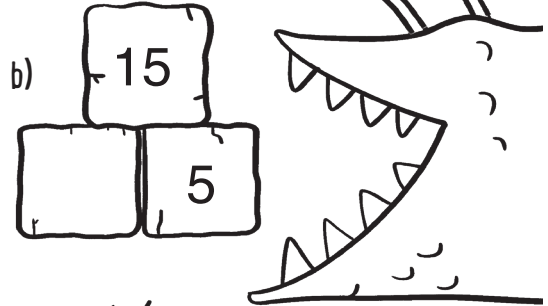
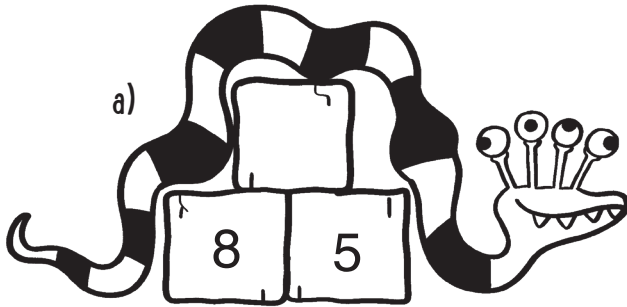
Want more? Scan the QR code to buy!

© Buster Books, 2023

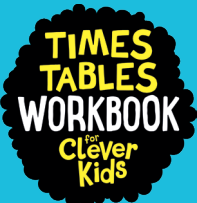
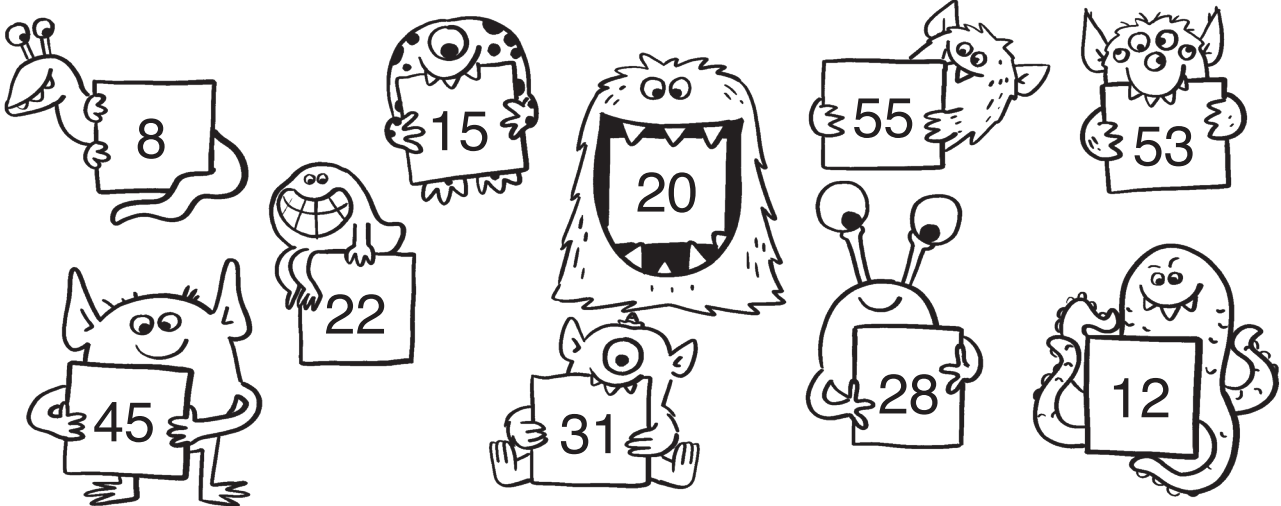


5 TIMES TABLE: PRACTICE

1) Use your knowledge of the 5 times table to complete these multiplication pyramids. The numbers in the two bottom boxes must multiply together to make the number at the top.



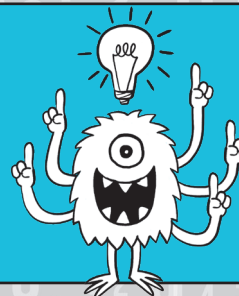
2) Circle all the monsters that are holding a multiple of 5.



This activity page contains puzzles from the *Times Tables Workbook for Clever Kids*.

Want more? Scan the QR code to buy!

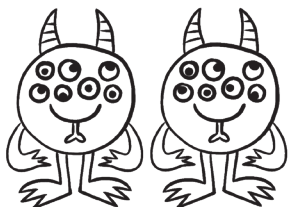
© Buster Books, 2023



7 TIMES TABLE: PRACTICE

3) All of these monsters have 7 eyes. Can you write a multiplication to show the number of eyes in each group of monsters?

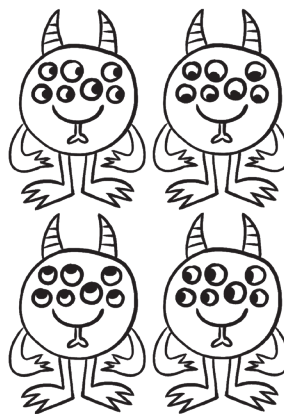
a)



$$\square \times 7 = \square$$

eyes

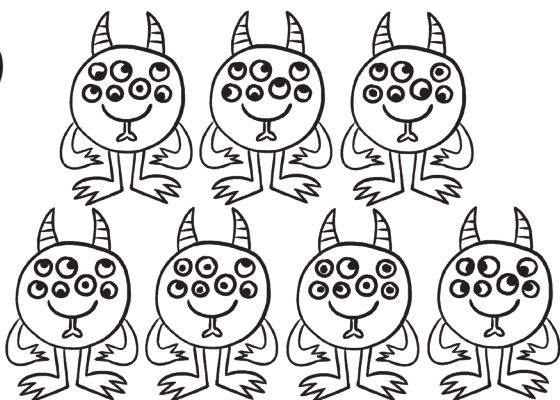
b)



$$\square \times 7 = \square$$

eyes

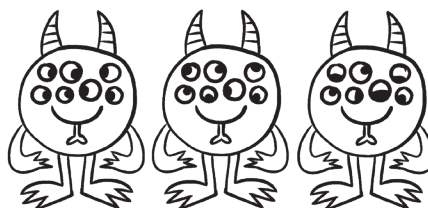
c)



$$\square \times 7 = \square$$

eyes

d)

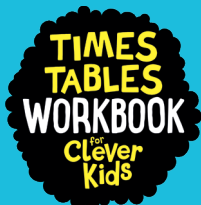


$$\square \times 7 = \square$$

eyes

TOP TIP!

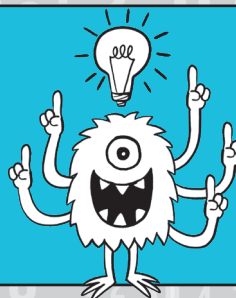
If the 7 times table feels tricky at first, focus on the tables you already know. For instance, if you know your 5 times table, then just swap the numbers around to get the answer to 5×7 .



This activity page contains puzzles from the *Times Tables Workbook for Clever Kids*.

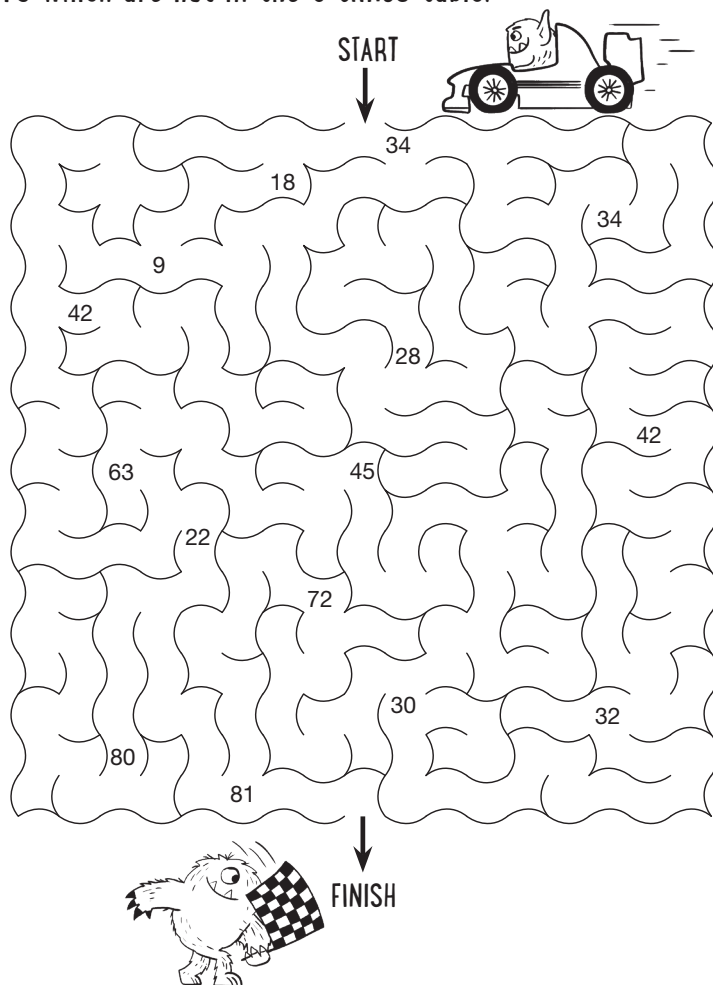
Want more? Scan the QR code to buy!

© Buster Books, 2023



9 TIMES TABLE: PUZZLES

1) Can you find your way through this maze. from top to bottom? You cannot pass by any numbers which are not in the 9 times table.

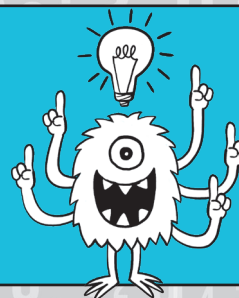


2) Can you circle the multiplication that produces the number on the monster in each line?

a) 4×9 7×9 5×9 6×9



b) 8×9 6×9 9×9 10×9



MIXED MULTIPLICATION PUZZLES

1) Can you fill in the missing answers?

$4 \times 5 = \square$

$3 \times 11 = \square$

$11 \times 12 = \square$

$8 \times 2 = \square$

$9 \times 3 = \square$

$7 \times 9 = \square$

$8 \times 6 = \square$

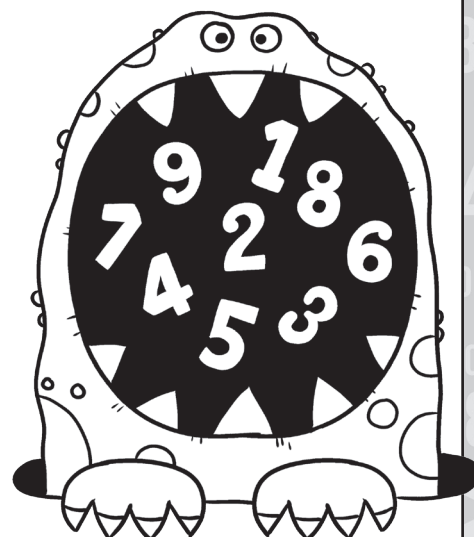
$5 \times 8 = \square$

$7 \times 7 = \square$

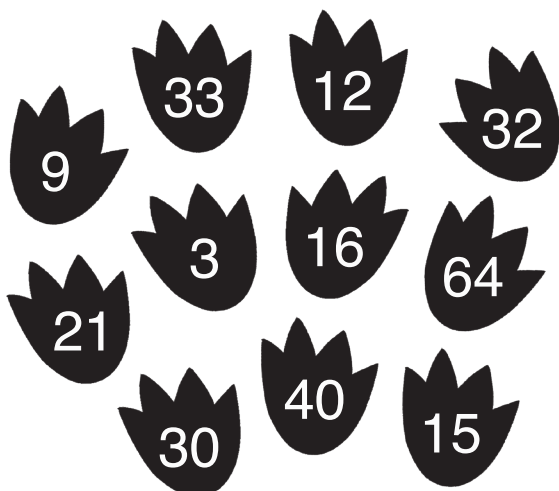
$4 \times 4 = \square$

$2 \times 10 = \square$

$6 \times 12 = \square$



2) Have a look at the numbers on these footprints. Circle the multiples of 3 in grey, and circle the multiples of 8 in black.



3) Can you answer these written multiplication questions?

a) What is 6 multiplied by 7?

.....

b) What are eight 5s?

.....

c) The 9th multiple of nine is 72. True or false?

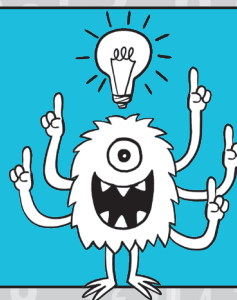
.....



This activity page contains puzzles from the *Times Tables Workbook for Clever Kids*.

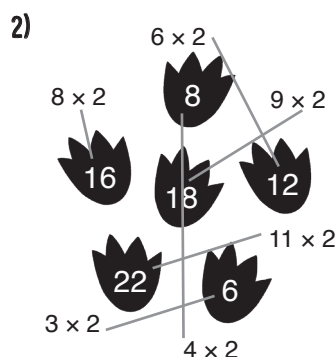
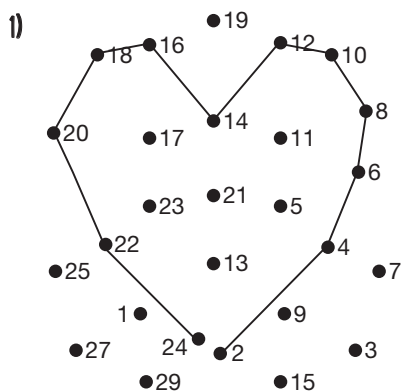
Want more? Scan the QR code to buy!

© Buster Books, 2023



ANSWERS

2 TIMES TABLE: PUZZLES



3)

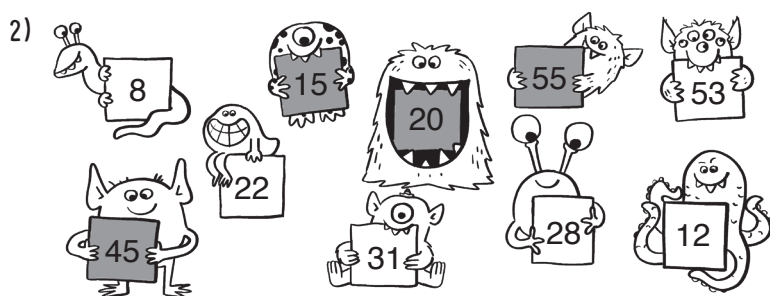
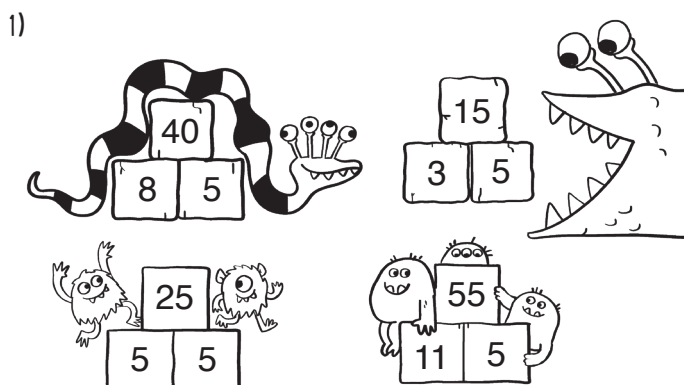
$$2 \times 4 = 8$$

$$1 \times 9 = 9$$

$$2 \times 7 = 14$$

$$2 \times 9 = 18$$

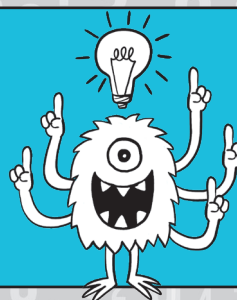
5 TIMES TABLE: PRACTICE



This activity page contains puzzles from the *Times Tables Workbook for Clever Kids*.

Want more? Scan the QR code to buy!

© Buster Books, 2023

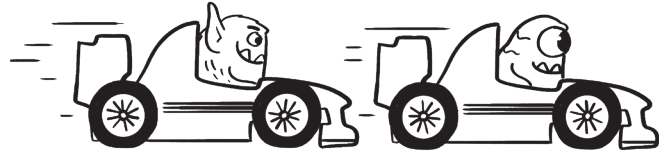


ANSWERS

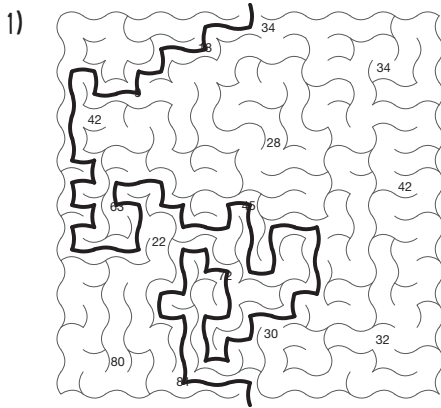
KS2
AGES 7-11

7 TIMES TABLE: PRACTICE

- 1) $2 \times 7 = 14$ eyes
 $4 \times 7 = 28$ eyes
 $7 \times 7 = 49$ eyes
 $3 \times 7 = 21$ eyes



9 TIMES TABLE: PUZZLES



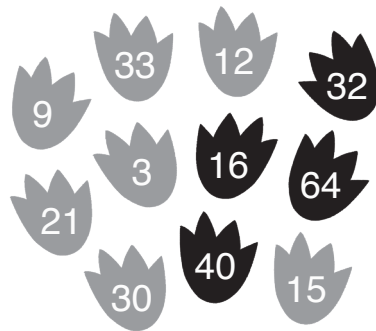
- 2) a) $6 \times 9 = 54$
b) $9 \times 9 = 81$

MIXED MULTIPLICATION PUZZLES

- 1)
- | | |
|----------------------|--------------------|
| $4 \times 5 = 20$ | $3 \times 11 = 33$ |
| $11 \times 12 = 132$ | $8 \times 2 = 16$ |
| $9 \times 3 = 27$ | $7 \times 9 = 63$ |
| $8 \times 6 = 48$ | $5 \times 8 = 40$ |
| $7 \times 7 = 49$ | $4 \times 4 = 16$ |
| $2 \times 10 = 20$ | $6 \times 12 = 72$ |

- 3) a) 6 multiplied by 7 is 42.
b) Eight 5s are 40.
c) False - the ninth multiple of 9 is 81. 72 is the eighth multiple.

- 2) The multiples of 3 are shaded in grey.
The multiples of 8 are shaded in black.



This activity page contains puzzles from the
Times Tables Workbook for Clever Kids.

Want more? Scan the QR code to buy!

© Buster Books, 2023

